

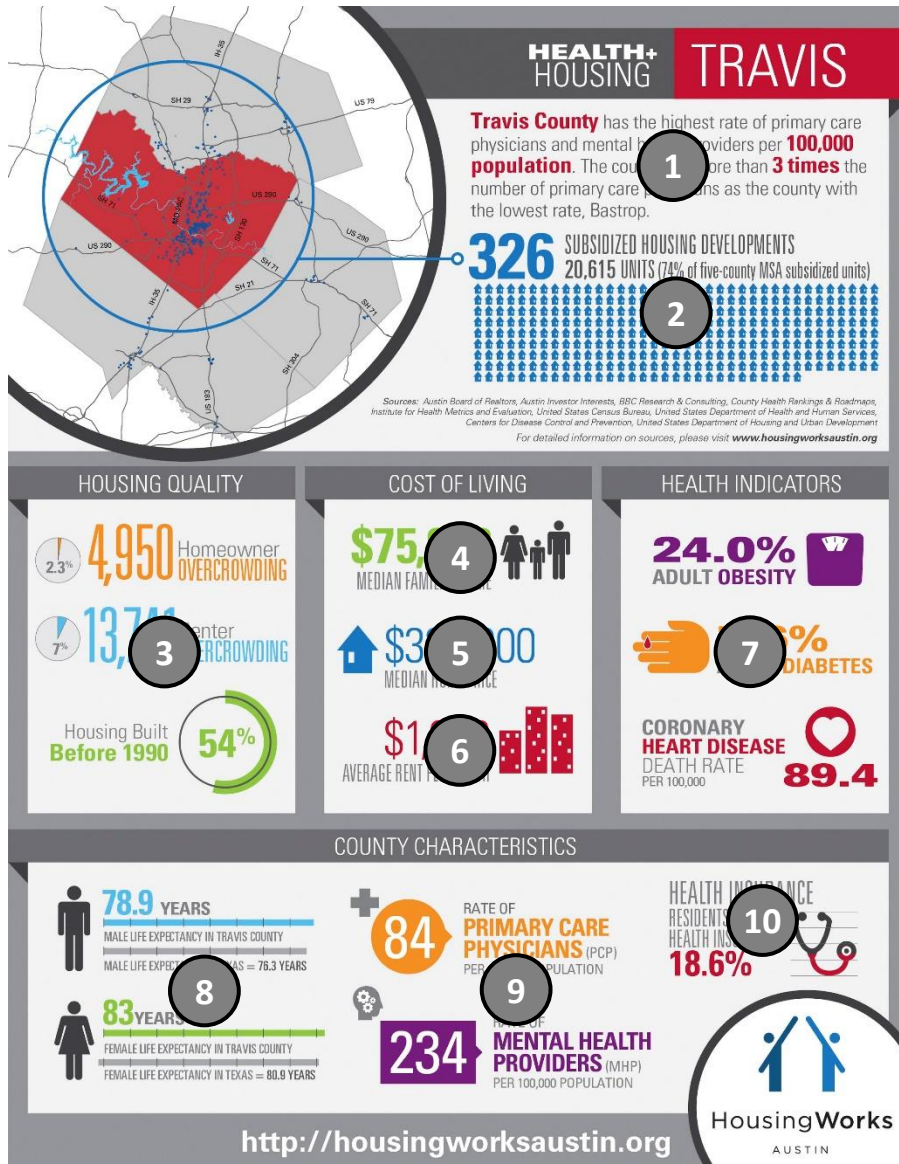


# HousingWorks

AUSTIN

## Health + Housing County Analyses Sources and Methodology November 2016

### Sources



The county analyses are based on a variety of sources and these are mentioned on each county analysis sheet. The numbers below correspond with the numbers marked on the sheet above for reference.

- Source 1: Combination of sources below:
  - County Health Rankings & Roadmaps, 2016
  - Institute for Health Metrics and Evaluation, 2012
  - US Department of Health and Human Services, Centers for Disease Control and Prevention, 2005-2011, and 2010
  - US Department of Health and Human Services, Centers for Disease Control and Prevention, 2006-2012
- Source 2: US Department of Housing and Urban Development, 2016 & BBC Research & Consulting, 2014. County Analysis based on methodology 1.<sup>1</sup>
- Source 3: US Census Bureau 2010-2014 5-Year ACS. County Analysis based on methodology 2 and 3.
- Source 4: US Census Bureau 2010-2014 5-Year ACS. Data available at County Level.
- Source 5: Austin Board of Realtors, Q3 2016. Data available at County Level.
- Source 6: Austin Investor Interests, Q3 2016. Data available at County Level.
- Source 7: US Department of Health and Human Services, Centers for Disease Control and Prevention, 2006-2012. Data available at County Level.
- Source 8: Institute for Health Metrics and Evaluation, 2012. Data available at County Level.
- Source 9: County Health Rankings & Roadmaps, 2016. Data available at County Level.
- Source 10: US Census Bureau 2010-2014 5-Year ACS. Data available at County Level.

## Methodology

Most of the data in the county analyses is available at a county level. For the rest of the data the following methodology is used.

1. For subsidized housing developments, 2016 data from the United States Department of Housing and Urban Development and 2014 data from BBC Research & Consulting collected was combined.
2. Overcrowding is defined as more than one persons living per room in a unit for overcrowding data. This definition is given in the report Measuring Overcrowding in Housing published by the United States Department of Housing and Urban Development in 2007.
3. For housing built before 1990, data on housing units from the American Community Survey is combined for the decades before 1990.

---

<sup>1</sup> See methodology section for reference.

## Limitations

- American Community Survey (ACS) is based on sampling and thus the data from ACS involves a margin of error. This margin of error varies for 1-year, 3-year, and 5-year data, with decreasing levels of margin of error.