



HousingWorks
AUSTIN

AUSTIN STRATEGIC HOUSING BLUEPRINT SCORECARD

PROGRESS TO DATE
2018-2024

Checking in on the Strategic Housing Blueprint after Seven Years

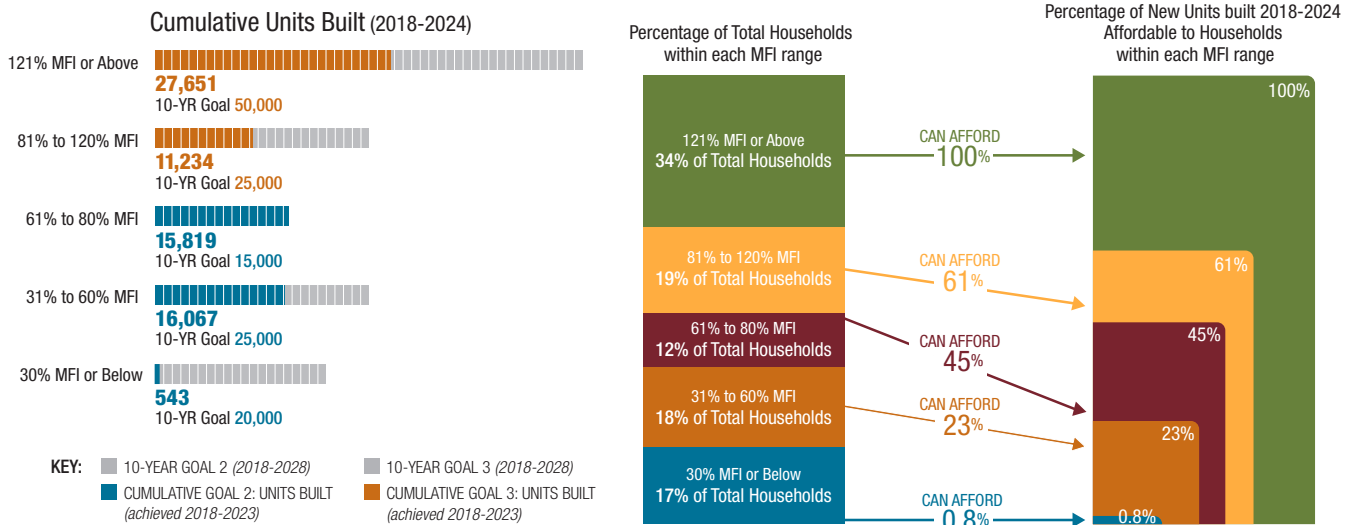
In 2017, Austin City Council adopted the Austin Strategic Housing Blueprint detailing goals to reach 135,000 housing units over the next ten years (2018-2023). The Blueprint includes District-specific goals to ensure that there is affordable housing throughout the city, as well as overall goals for the construction of housing units affordable to households at all income levels. This Progress to Date scorecard provides a snapshot of Austin's overall progress during the past 7 years toward achieving its 10-year affordability goals outlined in the Blueprint.

10-YEAR GOALS - PROGRESS TO DATE

GOAL 1: DISTRIBUTION - NEW AFFORDABLE HOUSING UNITS 10-YR GOAL

DISTRICT 1	DISTRICT 2	DISTRICT 3	DISTRICT 4	DISTRICT 5	DISTRICT 6	DISTRICT 7	DISTRICT 8	DISTRICT 9	DISTRICT 10
111% 7,891 out of 7,086 units built	118% 5,297 out of 4,492 units built	85% 5,330 out of 6,295 units built	96% 2,991 out of 3,105 units built	42% 1,890 out of 4,473 units built	34% 2,957 out of 8,590 units built	45% 2,992 out of 6,651 units built	20% 1,449 out of 7,217 units built	39% 1,418 out of 3,635 units built	2.5% 214 out of 8,456 units built
1,604 income-restricted units under construction	2,256 income-restricted units under construction	2,184 income-restricted units under construction	940 income-restricted units under construction	532 income-restricted units under construction	242 income-restricted units under construction	472 income-restricted units under construction	222 income-restricted units under construction	834 income-restricted units under construction	32 income-restricted units under construction

GOAL 2-3: NEW HOUSING UNITS 2018-2024 10-YR GOAL



GOAL 4:

DATA UNAVAILABLE

GOAL 5: IMAGINE AUSTIN CENTERS & CORRIDORS & HIGH OPPORTUNITY AREAS



GOAL 6: PRESERVATION 10-YR GOAL

PRESERVE 10,000 AFFORDABLE HOUSING UNITS OVER 10 YEARS



GOAL 7: PREVENT HOMELESSNESS 3-YR GOAL

PRODUCE 1,000 PERMANENT SUPPORTIVE HOUSING (PSH) UNITS OVER 3 YEARS

