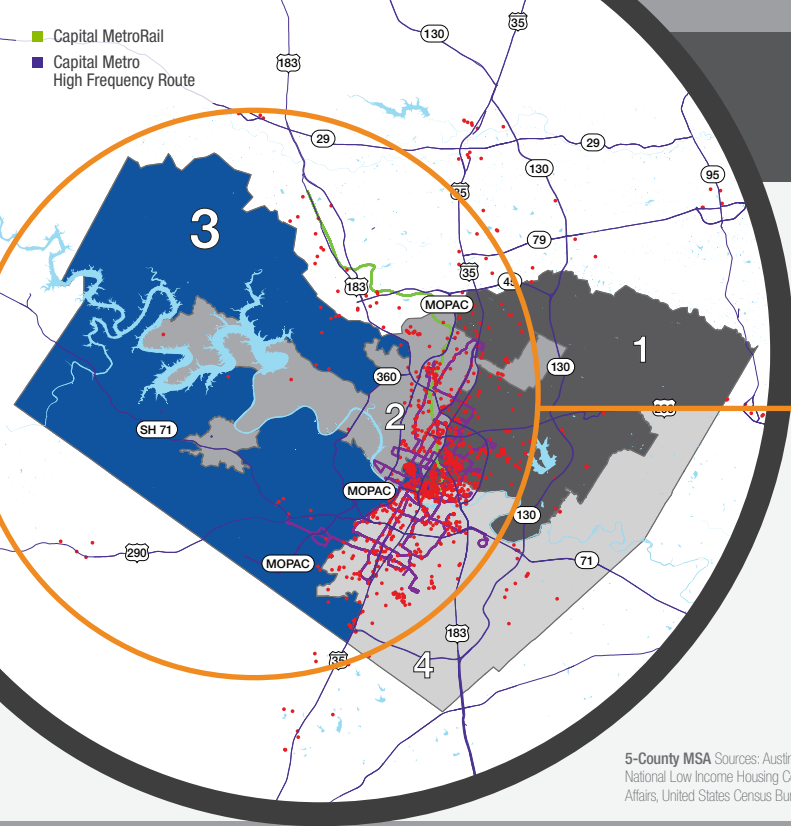


Capital MetroRail
Capital Metro
High Frequency Route



TRAVIS COUNTY 03

2023 AFFORDABLE HOUSING PRECINCT

With a **26%** increase in the affordable unit count since 2022, **Precinct 3** experienced the largest percentage increase in subsidized units since 2023. However, with only **7,218** affordable units throughout the precinct, Precinct 3 contains the lowest share (**11%**) of the county's affordable housing supply out of all four precincts.

670 SUBSIDIZED HOUSING UNITS
OUTSIDE OF AUSTIN CITY LIMITS



** Each House = 100 Subsidized Housing Units

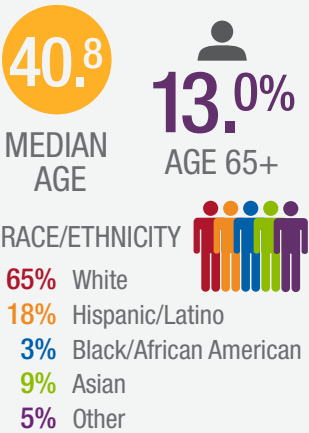
670 EXISTING
SUBSIDIZED UNITS
OUTSIDE OF AUSTIN CITY LIMITS

0 PLANNED
SUBSIDIZED UNITS
OUTSIDE OF AUSTIN CITY LIMITS

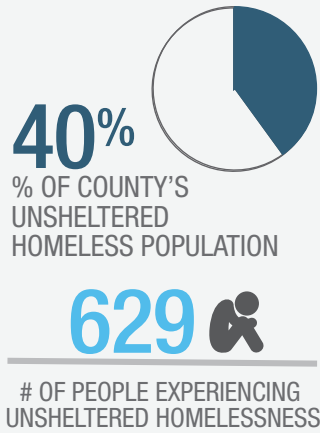
7,218 TOTAL SUBSIDIZED HOUSING UNITS
IN TRAVIS COUNTY INCLUDING THE CITY OF AUSTIN

5-County MSA Sources: Austin Board of Realtors, Austin Investor Interests, Austin Tenants' Council, Center for Neighborhood Technology, Ending Community Homelessness Coalition, National Low Income Housing Coalition, City of Austin Housing & Planning Department, Public and Affordable Housing Research Corporation, Texas Department of Housing & Community Affairs, United States Census Bureau, United States Department of Housing and Urban Development

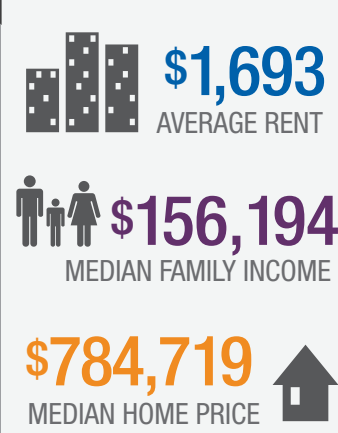
DEMOGRAPHICS



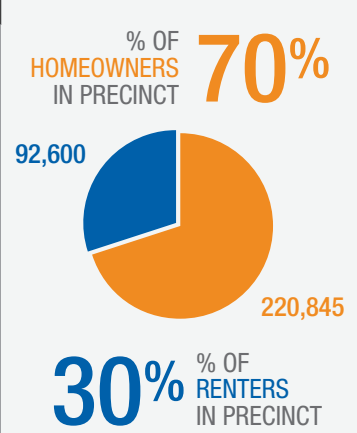
HOMELESSNESS



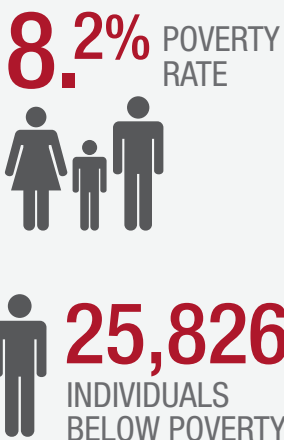
COST OF LIVING



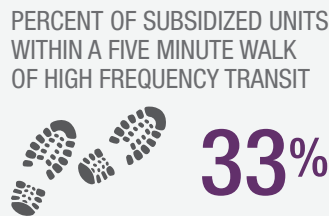
RENTER VS. OWNER



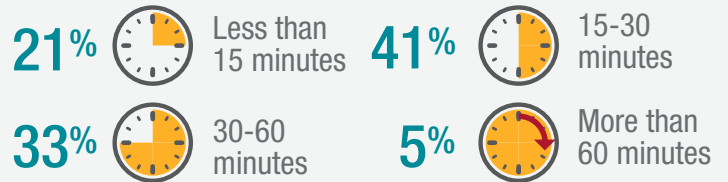
POVERTY RATE



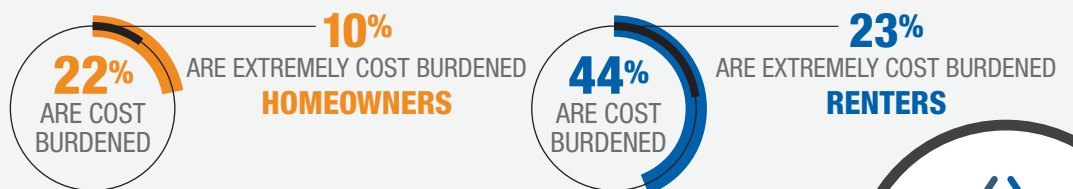
TRANSIT ACCESS



WORK COMMUTE TIME



COST BURDEN



HousingWorks
AUSTIN

<http://housingworksAustin.org>