

# TRAVIS COUNTY 04

## 2022 AFFORDABLE HOUSING PRECINCT

Precinct 4 has the highest percentage of **residents (49%) who rent** their homes among all other Travis County precincts. Additionally, Precinct 4 renters experience the highest rate of housing cost burden in Travis County, as **46% of renters** in Precinct 4 **pay more than 30% of their income toward housing costs alone.**

**1,500** SUBSIDIZED HOUSING UNITS  
OUTSIDE OF AUSTIN CITY LIMITS



\*\* Each House = 100 Subsidized Housing Units

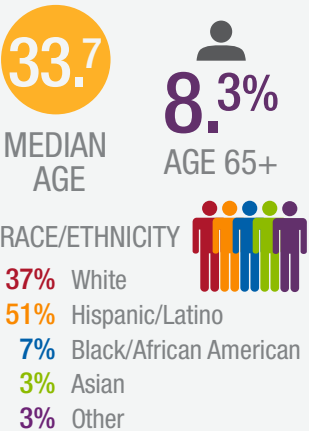
**519** EXISTING  
SUBSIDIZED UNITS  
OUTSIDE OF AUSTIN CITY LIMITS

**981** PLANNED  
SUBSIDIZED UNITS  
OUTSIDE OF AUSTIN CITY LIMITS

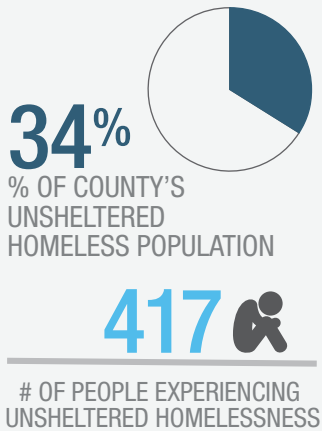
**23,465** TOTAL SUBSIDIZED HOUSING UNITS  
IN TRAVIS COUNTY INCLUDING THE CITY OF AUSTIN

5-County MSA Sources: Austin Board of Realtors, Austin Investor Interests, Austin Tenants' Council, Center for Neighborhood Technology, Ending Community Homelessness Coalition, National Low Income Housing Coalition, City of Austin Housing & Planning Department, Public and Affordable Housing Research Corporation, Texas Department of Housing & Community Affairs, United States Census Bureau, United States Department of Housing and Urban Development

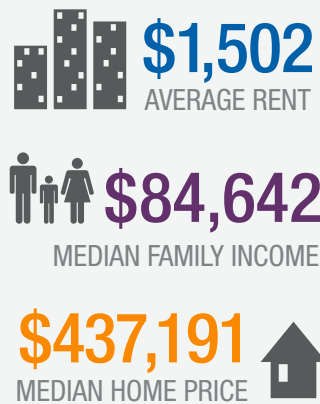
### DEMOGRAPHICS



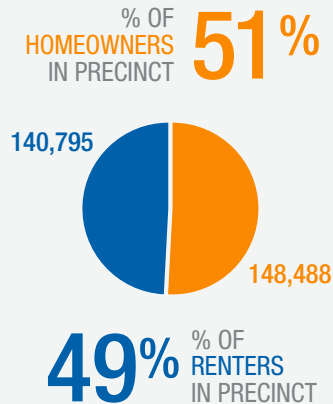
### HOMELESSNESS



### COST OF LIVING



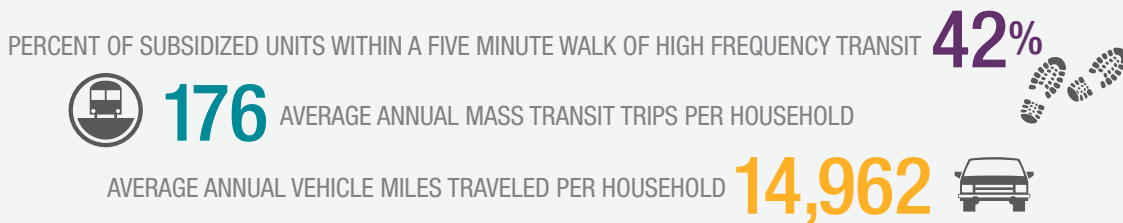
### RENTER VS. OWNER



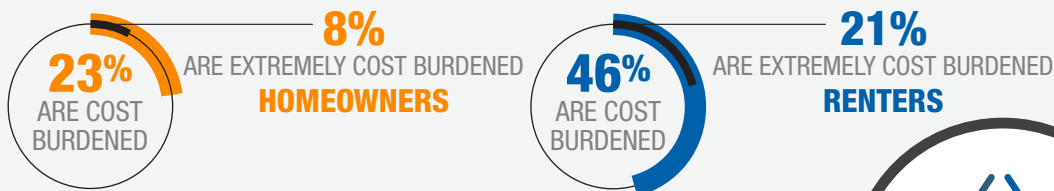
### POVERTY RATE



### TRANSIT CHOICES



### COST BURDEN



HousingWorks  
AUSTIN

<http://housingworksAustin.org>

