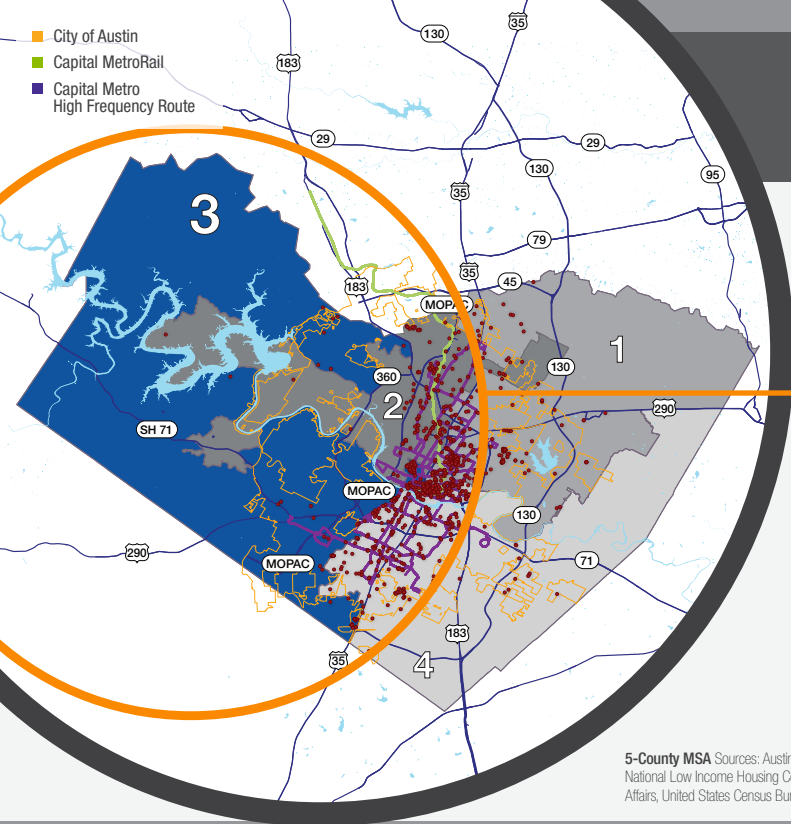


- City of Austin
- Capital MetroRail
- Capital Metro High Frequency Route



TRAVIS COUNTY 03

2022 AFFORDABLE HOUSING PRECINCT

Precinct 3 households **pay more for housing** than in any other precinct in Travis County, with **homes selling for \$850,883** and **units renting for \$1,697** on average.

670 SUBSIDIZED HOUSING UNITS OUTSIDE OF AUSTIN CITY LIMITS



** Each House = 100 Subsidized Housing Units

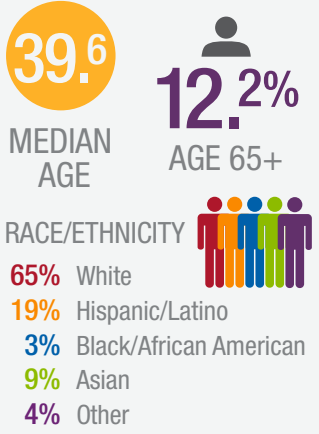
490 EXISTING SUBSIDIZED UNITS OUTSIDE OF AUSTIN CITY LIMITS

180 PLANNED SUBSIDIZED UNITS OUTSIDE OF AUSTIN CITY LIMITS

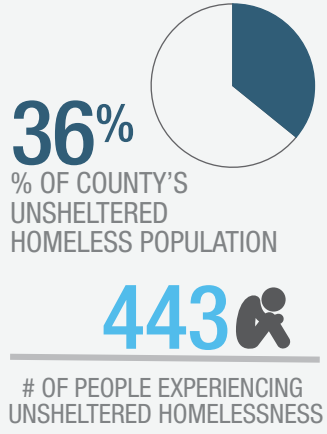
5,876 TOTAL SUBSIDIZED HOUSING UNITS IN TRAVIS COUNTY INCLUDING THE CITY OF AUSTIN

5-County MSA Sources: Austin Board of Realtors, Austin Investor Interests, Austin Tenants' Council, Center for Neighborhood Technology, Ending Community Homelessness Coalition, National Low Income Housing Coalition, City of Austin Housing & Planning Department, Public and Affordable Housing Research Corporation, Texas Department of Housing & Community Affairs, United States Census Bureau, United States Department of Housing and Urban Development

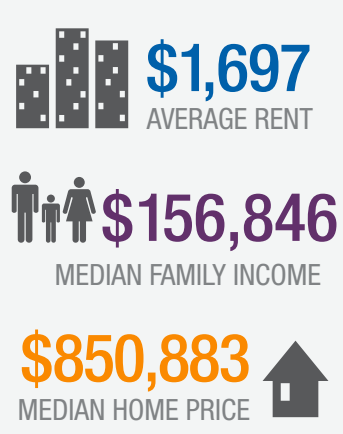
DEMOGRAPHICS



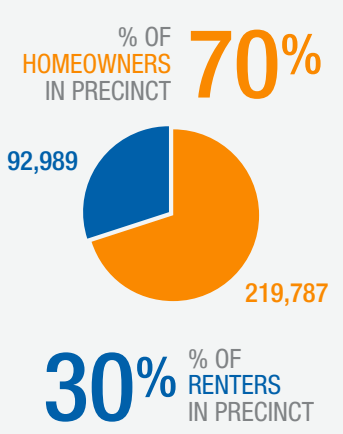
HOMELESSNESS



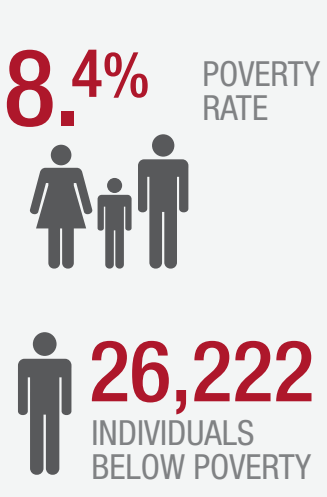
COST OF LIVING



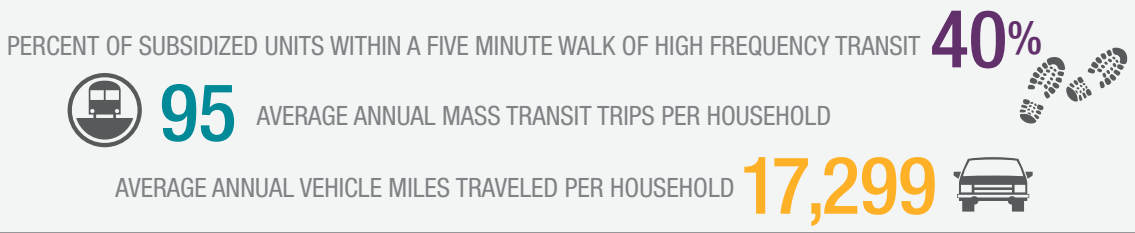
RENTER VS. OWNER



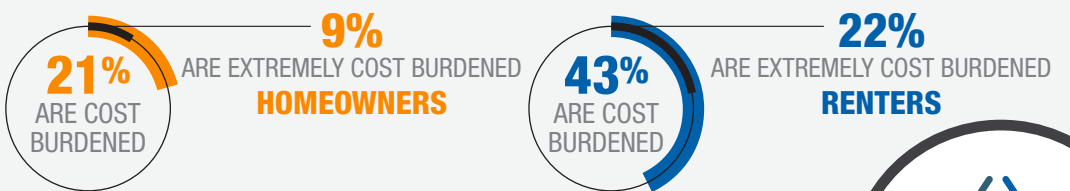
POVERTY RATE



TRANSIT CHOICES



COST BURDEN



Published 06/2023



<http://housingworksaustin.org>

